

UNIVERSITY OF BELGRADE
TECHNICAL FACULTY BOR

**52nd International October Conference on
Mining and Metallurgy**



PROCEEDINGS

Edited by

Saša Stojadinović

and

Dejan Petrović

November 29th – 30th 2021

Bor, Serbia

UNIVERSITY OF BELGRADE
TECHNICAL FACULTY IN BOR

**52nd International October Conference on
Mining and Metallurgy**



PROCEEDINGS

Edited by

Saša Stojadinović

and

Dejan Petrović

November 29th – 30th 2021

Bor, Serbia

**52nd International October Conference
on Mining and Metallurgy, IOC 2021**

PUBLISHER:

UNIVERSITY OF BELGRADE - TECHNICAL FACULTY IN BOR, BOR, NOVEMBER 2021

FOR THE PUBLISHER:

DEAN: Prof. dr Nada Štrbac

EDITORS:

Prof. dr Saša Stojadinović

Doc. dr Dejan Petrović

TECHNICAL EDITOR

Pavle Stojković, MSc.

PRINTED BY:

»Štamparija Atlantis d.o.o.« Niš

CIRCULATION: 100 Copies

CIP – Каталогизација у публикацији –

Народна библиотека Србије, Београд

622(082)

669(082)

**INTERNATIONAL October Conference on Mining
and Metallurgy (52 ; 2021 ; Bor)**

Proceedings / 52nd International October
Conference on Mining and Metallurgy - IOC 2021,
November 29th - 30th 2021 Bor, Serbia ; [organizer]
University of Belgrade, Technical Faculty in Bor ;
[co-organizer Institute for Mining and Metallurgy
Bor] ; edited by Saša Stojadinović and Dejan
Petrović. - Bor : University of Belgrade, Technical
Faculty, 2021 (Niš : Atlantis). - V, 228 str. : ilustr. ;
25 cm

Tiraž 100. - Bibliografija uz svaki rad.

ISBN 978-86-6305-119-5

а) Рударство -- Зборници б) Металургија --
Зборници

COBISS.SR-ID 52072201

ORGANIZER:

UNIVERSITY OF BELGRADE – TECHNICAL FACULTY IN BOR

Co-ORGANIZER:

INSTITUTE FOR MINING AND METALLURGY BOR

Under the Auspice of:



**The Ministry of Education, Science and
Technological Development of the Republic of
Serbia**

CONFERENCE SPONSORS





COMMITTEES

52nd International October Conference on Mining and Metallurgy, IOC 2021

SCIENTIFIC COMMITTEE

- Prof. dr Nada Štrbac, (UB TF Bor, Serbia)
- Prof. dr Iwao Katayama, (Osaka University, Osaka, Japan)
- Prof. dr Rodoljub Stanojlović, (UB TF Bor, Serbia)
- Prof. dr Radoje Pantović, (UB TF Bor, Serbia)
- Prof. dr Jakob Lamut, (ULj FNT Ljubljana, Slovenia)
- Prof. dr Sanda Krausz, (University of Petroșani, Romania)
- Prof. dr Grozdanka Bogdanović, (UB TF Bor, Serbia)
- Prof. dr Jelena Penavin Škundrić, (TF Banja Luka, B&H)
- Prof. dr Seshadri Seetharaman, (Royal Institute of Technology, Stockholm, Sweden)
- Prof. dr Dragoslav Gusković, (UB TF Bor, Serbia)
- Prof. dr Jožef Medved, (ULj FNT Ljubljana, Slovenia)
- Dr Slavomir Hredzak, (SAS Kosice, Slovakia)
- Prof. dr Aleksandar Dimitrov, (FTM Skopje, FYR Macedonia)
- Prof. dr Karlo Raić, (UB TMF, Serbia)
- Prof. dr Snežana Šerbula, (UB TF Bor, Serbia)
- Dr Ana Kostov, (IRM Bor, Serbia)
- Prof. dr Kemal Delijić, (MTF Podgorica, Montenegro)
- Prof. dr Stoyan Groudev, (UMG "Saint Ivan Rilski" Sofia, Bulgaria)
- Dr Andrei Rotaru, (Facultatea de Mecanica, Romania)
- Prof. dr Krzysztof Fitzner, (AGH University, Krakow, Poland)
- Prof. dr Sulejman Muhamedagić, (FMM Zenica, B&H)
- Prof. dr Anđelka Mihajlov, (Educons University, Serbia)
- Prof. dr Luis Filipe Malheiros, (FEUP, Porto, Portugal)
- Prof. dr Svetlana Ivanov, (UB TF Bor, Serbia)
- Prof. dr Batrić Pešić, (Materials Science Faculty, Idaho, USA)
- Prof. dr Ljubica Ivanić, (UB TF Bor, Serbia)
- Dr Srećko Stopić, (RWTH Aachen, IME Aachen, Germany)
- Prof. dr Boštjan Markoli, (ULj FNT Ljubljana, Slovenia)
- Dr Magnus Ericsson, (Lulea Technical University, Stockholm, Sweden)
- Prof. dr Tamara Holjevac Grgurić, (MF Sisak, Croatia)
- Prof. dr Boyan Boyanov, (University Paisiy Hilendarski, Plovdiv, Bulgaria)
- Prof. dr Milan Antonijević, (UB TF Bor, Serbia)
- Prof. dr Tatjana Volkov-Husović, (UB TMF, Serbia)
- Prof. dr Branka Jordović, (TF Čačak, Serbia)
- Prof. dr Milan Trumić, (UB TF Bor, Serbia)
- Prof. dr Tomaš Havlik, (TUKE, Slovakia)
- Prof. dr Carl Heinz Spitzer, (TU Clausthal, Germany)
- Dr Mile Bugarin, (IRM Bor, Serbia)
- Prof. dr Velizar Stanković, (UB TF Bor, Serbia)
- Prof. dr Costas Matis, (AU Thessaloniki, Greece)
- Dr Milenko Ljubojev, (IRM Bor, Serbia)
- Prof. dr Velimir Radmilović, (University of California at Berkeley, USA)
- Prof. dr Dejan Tanikić, (UB TF Bor, Serbia)
- Dr Mirjam Jan-Blažič, (Slovenian Foundryen Society, Slovenia)
- Prof. dr Vitomir Milić, (UB TF Bor, Serbia)

Prof. dr Desimir Marković, (UB TF Bor, Serbia)

Prof. dr Mirjana Rajčić Vujašinović, (UB TF Bor, Serbia)

Dr Vladan Ćosović, (UB IHTM, Serbia)

Prof. dr Dimitris Panias, (NTUA, Athens, Greece)

Prof. dr Mirko Gojić, (MF Sisak, Croatia)

Prof. dr Vladimir Krstić, (Queen's University, Canada)

Prof. dr Dimitriu Sorin, (Polytechnic University of Bucharest, Romania)

Dr Miroslav Sokić, (UB ITNMS, Serbia)

Prof. dr Vladislav Kecojević, (West Virginia University, USA)

Prof. dr Dragan Manasijević, (UB TF Bor, Serbia)

Prof. dr Mirsada Oruč, (FMM Zenica, B&H)

Prof. dr Vlastimir Trujić, (IRM Bor, Serbia)

ORGANIZING COMMITTEE

Prof. dr Saša Stojadinović, vanredni profesor, UB, TF Bor

Prof. dr Ljubiša Balanović, vanredni profesor, UB, TF Bor

Doc. dr Dejan Petrović, docent, UB, TF Bor

dr Ana Kostov, naučni savetnik, Institut za rudarstvo i metalurgiju Bor

Doc. dr Aleksandra Mitovski, docent, UB, TF Bor

Doc. dr Ana Simonović, docent, UB, TF Bor

Prof. dr Jovica Sokolović, vanredni profesor, UB, TF Bor

Prof. dr Đorđe Nikolić, redovni profesor, UB, TF Bor

Doc. dr Uroš Stamenković, docent, UB, TF Bor

Prof. dr Milan Radovanović, vanredni profesor, UB, TF Bor

Doc. dr Danijela Voza, docent, UB, TF Bor

Jelena Ivaz, asistent, UB, TF Bor

Pavle Stojković, asistent, UB, TF Bor

Mladen Radovanović, asistent, UB, TF Bor

Predrag Stolić, asistent, UB, TF Bor

Kristina Božinović, asistent, UB, TF Bor

Sandra Vasković, Nastavnik engleskog jezika, UB, TF Bor

Oliver Marković, šef IKTC, UB, TF Bor

Miomir Voza, laborant, UB, TF Bor

TABLE OF CONTENTS

Aleksandra Milosavljević	
THE COMPLEXITY OF SEM-EDS – WHAT AFFECTS THE QUALITY OF OBTAINED RESULTS?	1
Zoran Karastojković, R Perić, M Srečković	
LASER QUENCHING OF CUTTING TOOL STEELS - A REVIEW	5
Slavica Miletić, D Bogdanović, E Požega	
IMPACT OF EXTRAORDINARY SECURITY MEASURES TO EMPLOYEES DURING THE PANDEMIC COVID-9	15
Daniela Grigorova, R Paunova	
KINETIC STUDY OF SOLID-PHASE REDUCTION OF POLYGRADIENT IRON-CONTAINING MATERIAL	19
Emina Požega, D Simonović, S Marjanović, M Jovanović, L Gomidželović, M Mitrović, Z Stanojević Šimšić	
PART I: WHAT MAKES A GOOD THERMOELECTRIC	23
Emina Požega, D Simonović, S Marjanović, M Jovanović, L Gomidželović, M Mitrović, S Miletić	
PART II: WHAT MAKES A GOOD THERMOELECTRIC	27
Dragan Manasijević, Lj Balanović, I Marković, M Gorgievski, U Stamenković, K Božinović, D Minić, M Premović	
STUDY OF MICROSTRUCTURE AND THERMAL CONDUCTIVITY OF THE Ag–Bi–Sn ALLOYS	31
Vladimir S. Topalović, S Matijašević, S Grujić, J Stojanović, J Nikolić, V Savić, S Zildžović	
THE INFLUENCE OF THE PARTICLE SIZE ON CRYSTALLIZATION OF GLASS POWDERS FROM THE SYSTEM $\text{Li}_2\text{O}-\text{Al}_2\text{O}_3-\text{GeO}_2-\text{P}_2\text{O}_5$	35
Vesna Marjanović, R Marković, V Krstić	
TECHNOLOGIES FOR PHYSICAL TREATMENT OF WATER CONTAINING SELENIUM: A REVIEW	39
Vesna Marjanović, R Marković, V Krstić	
TECHNOLOGIES FOR BIOLOGICAL TREATMENT OF WATER CONTAINING SELENIUM: A REVIEW	43
Milenko Jovanović, M Mikić, M Maksimović, D Kržanović, R Rajković, E Požega	
USAGE SPECIFICS OF GEOGRIDS	47

Srećko Manasijević, Z Zovko Brodarac, N Dolić, M Djurdjević, R Radiša	
INTERMETALLIC BONDING BETWEEN A RING CARRIER AND AN ALUMINUM PISTON ALLOY	51
Snežana Šarboh	
PATENTED INVENTIONS OF LJUBOMIR KLERIĆ	55
Miomir Mikic, M Jovanović, R Rajković, D Kržanović, E Požega	
DEGRADED AREA OF VELIKI KRIVELJ QUARRY RECULTIVATION	59
Dragana Adamović, D Ishiyama, H Kawaraya, O Yasumasa	
EFFECTS OF TAILINGS ON GROUNDWATER ALONG BOR AND BELA RIVERS IN THE BOR MINING AREA, EASTERN SERBIA	63
Ana Kostov, Z Stanojević Šimšić, A Milosavljević,	
CHARACTERIZATION OF ALLOYS CuAlAu0.5	67
Marija Milenković, V Jovanović, J Paunković, V Krstić	
MULTICRITERIA ANALYSIS OF THE LEVEL OF SUSTAINABLE DEVELOPMENT OF THE TOPLICA DISTRICT USING THE ELECTRE METHOD	71
Daniel Kržanović, R Rajković, D Stevanović, M Mikić, M Jovanović, S Petrović	
LONG-TERM PLANNING OF MINING THE LEAD AND ZINC ORE DEPOSIT IN THE BRSKOVO ORE FIELD, THE REPUBLIC OF MONTENEGRO	75
Radmilo Rajković, D Kržanović, M Mikić, M Jovanović	
CALCULATION OF SAFETY DISTANCE FOR THE OPERATION OF MINING EQUIPMENT IN THE WORKING ENVIRONMENT WITH WEAKENED CHARACTERISTICS AT THE OPEN PIT "NORTH MINING DISTRICT" OF THE COPPER MINE MAJDANPEK	79
Zdenka Stanojević Šimšić, A Kostov, A Milosavljević, E Požega	
HARDNESS, MICROHARDNESS AND ELECTROCONDUCTIVITY OF ALLOYS WITH VARIABLE Cu CONTENT IN Cu-Al-Ag SYSTEM	83
Miodrag Banješević	
STRATIGRAPHY AND AGE OF ROCK UNITS AND MINERALIZATION IN THE TIMOK MAGMATIC COMPLEX AND THE BOR METALLOGENIC ZONE – A REVIEW	87
Milan Radivojević, Z Stević, M Tanasković	
DUALPHASED FOURWAY INTERSECTION REGULATED BY TRAFFIC LIGHTS WITH FIXED AND ADAPTIVE MOD OF OPERATION	93
Filip Gramić, N Rančić, S Filipović, J Đorđević	
USE OF COPPER TAILING AND COPPER SLAG IN 3D PRINTED CONCRETE PROCESSES	97
Filip Gramić, N Rančić, S Filipović, J Đorđević,	
POSSIBILITY OF USING MINING WASTE IN THE PRODUCTION OF BRICK PRODUCTS	101

Stepan O. Vidysh

GOLD-SILVER ALLOYS ANODIC DISSOLUTION RESEARCH IN HYDROCHLORIC ACID ELECTROLYTES 105

Milan Gorgievski, M Marković, D Božić, Vr Stanković, N Štrbac, V Grekulović, M Zdravković

ADSORPTION ISOTHERMS FOR COPPER IONS ADSORPTION ONTO WALNUT SHELLS 109

Miljan Marković, M Gorgievski, N Štrbac, V Grekulović, A Mitovski, K Božinović, M Zdravković

pH AND CONDUCTIVITY CHANGE DURING THE RINSING AND ADSORPTION OF COPPER IONS ONTO WALNUT SHELLS 113

Vesna Grekulović, A Mitovski, M Rajčić Vujasinović, N Štrbac, M Zdravković, M Gorgievski, M Marković

ELECTROCHEMICAL BEHAVIOR OF COPPER IN CHLORIDE MEDIUM IN THE PRESENCE OF WALNUT SHELL MACERATE 117

Marija Šljivić-Ivanović, S Dimović, I Jelić,

EXPERIMENTAL DESIGN APPROACH IN RADIONUCLIDE SORPTION 121

Ivana Jelić, A Savić, M Šljivić-Ivanović, S Dimović

INFLUENCE OF SILICA FUME ON SCC CONCRETE PROPERTIES 125

Milan Radovanović, A Simonović, M Petrović Mihajlović, Ž Tasić, V Nedelkovski, M Antonijević

L-LYSINE AS CORROSION INHIBITOR OF STAINLESS STEEL IN RINGER'S SOLUTION 129

Dragana Marilović, M Trumić, M Trumić, Lj Andrić

THE INFLUENCE OF CALCIUM IONS ON DEINKING FLOTATION RECOVERY UNDER DIFFERENT CONDITIONS 133

Dragana Medić, S Milić, S Alagić, M Nujkić, S Đorđević, A Papludis

OPTIMIZATION OF CATHODIC MATERIAL LEACHING PROCESS IN ACID-SULPHATE SOLUTION 137

Milijana Mitrović, D Gusković, S Marjanović, B Trumić, E Požega, U Stamenković, J Petrović

OBTAINING MULTILAYER COPPER STRIPS BY ARB (ACCUMULATIVE ROLL BONDING) ROLLING PROCESS 141

Nataša Đorđević, S Mihajlović, N Obradović, A Peleš, S Filipović

THE INFLUENCE OF HIGH COMPACTION PRESSURE ON CORDIERITE-BASED CERAMICS 145

Nataša Đorđević, S Mihajlović, M Sokić, B Marković

SEM AND X-RAY ANALYSES OF SINTERED MgO / Bi₂O₃ BINARY SYSTEM 149

Ivana Ilić, J Sokolović, M Trumić, Z Stirbanović	
COMPARATIVE RESULTS OF COPPER FLOTATION FROM SLAG BEFORE AND AFTER THE PROCESS OF MAGNETIC CONCENTRATION	153
Daniela Grigorova	
FERROSILICON OBTAINING USING IRON-SILICATE –FAYALITE	157
Slavica Mihajlović, M Jovanović, N Đorđević, A Patarić, M Vlahović, V Kašić	
THE CLAY PRELIMINARY TESTING FROM MUNICIPALITY AREA OF REKOVAC	161
Milan Milosavljević, M Premović, D Minić, Dn Mansijević, Ar Đorđević, M Kolarević	
EXPERIMENTAL AND THERMODYNAMIC STUDY OF ISOTHERMAL SECTIONS AT 600 °C AND 400 °C OF TERNARY Bi-Cu-Ge SYSTEM	165
Aleksandar Đorđević, D Minić, M Premović, D Mansijević, M Milosavljević, V Ristić	
STUDY OF TEMPERATURE PHASE TRANSFORMATION OF THE TERNARY Bi-Cu-Ge SYSTEM	169
Aleksandar Savić, I Jelić, M Šljivić-Ivanović, S Dimović, N Pudar, A Pfandler	
RECYCLED COARSE AGGREGATE AND FLY ASH EFFECT ON COMPRESSIVE STRENGTH OF SELF-COMPACTING CONCRETE	173
Vladan Kašić, D Životić, V Simić, A Radosavljević-Mihajlović, J Stojanović, S Mihajlović, M Vukadinović	
FORECAST RESOURCES OF ZEOLITHIC TUFFS OF SERBIA	177
Vladan Kašić, A Radosavljević-Mihajlović, S Radosavljević, J Stojanović, S Mihajlović, M Vukadinović	
GEOLOGICAL AND MINERAL CHARACTERISTICS OF ZEOLITHIC TUFF TOPONICA DEPOSITS NEAR KOSOVSKA KAMENICA	181
Konstantin Petkov, V Stefanova, P Iliev	
METHOD FOR UTILIZATION OF THE SULFURIC ACID OBTAINED DURING AUTOCLAVE DISSOLUTION OF PYRITE CONCENTRATE	185
Stefan Đorđević, D Ishiyama, Y Ogawa, Z Stevanović, O Osenyeng, D Adamović, V Trifunović	
MONITORING OF pH VALUE AND CONCENTRATION OF COPPER IN RIVERS DOWNSTREAM FROM BOR MINE IN PERIOD 2015-2021	189
Viša Tasić, M Cocić, B Radović, T Apostolovski-Trujić	
CHEMICAL COMPOSITION OF PARTICULATE MATTER IN THE INDOOR AIR AT THE TECHNICAL FACULTY IN BOR (SERBIA)	193
Snežana Ignjatović, I Vasiljević, M Negovanović	
DEFINING STRUCTURAL CORRELATION USING OF TOTAL HORIZONTAL GRADIENT	197

Velizar Stanković, M Janošević

**INCREASING THE CAPACITY OF THE COPPER SMELTING COMPANY IN THE COMPANY
"SERBIA ZIJIN COPPER" - CHALLENGES AND CONSEQUENCES TO THE ENVIRONMENT** 201

Vladimir Jovanović, D Todorović, B Ivošević, D Radulović, S Milićević, D Nišić

**CHARACTERIZATION OF PELLET SAMPLES OBTAINED BY PELETIZATION OF LIMESTONE
AND SEAWEED** 205

Vanja Trifunović, L Avramović, R Jonović, S Milić, S Đorđievski, M Jonović

**HYDROMETALLURGICAL TREATMENT OF ELECTIRIC ARC FURNACE DUST IN AIM OF ZINC
SEPARATION** 209

Jovana Bošnjaković, N Knežević, N Čutović, M Bugarčić, A Jovanović, Z Veličković, S
Manasijević

**EVALUATION OF ADSORPTION PERFORMANCE OF PHOSPHATES REMOVAL USING CELL-
MG HYBRID ADSORBENT** 213

Dragan Radulović, Lj Andrić, D Božović, V Jovanović, B Ivošević, D Todorović,

**POSSIBILITY OF USING LIMESTONE FROM "PJEŠIVAČKI DO"-DANILOVGRAD DEPOSIT AS
FILLER IN VARIOUS INDUSTRY BRANCHES** 217

Predrag Stolić, J Ivaz, D Petrović, Zoran Stević

**ADVANTAGES OF MINING ENGINEERING CURRICULUM REALIZATION USING
SOLUTIONS BASED ON FREE SOFTWARE** 221

Slađana Krstić, E Požega, S Petrović, S Magdalinović, D Urošević, S Miletić, Z Stojanović
Šimšić

**QUALITY INVESTIGATION OF SAND FOR THE PRODUCTION OF AGGREGATES ON
VINOGRADI LOCALITY (DELIBLATSKA PEŠČARA)** 225

Saša Marjanović, D Gusković, M Mitrović, E Požega ,B Trumić, U Stamenković

**INFLUENCE OF COLD ROLLING AND ANNEALING ON HARDNESS OF BIMETALLIC STRIP
Cu– Al** 229

CHEMICAL COMPOSITION OF PARTICULATE MATTER IN THE INDOOR AIR AT THE TECHNICAL FACULTY IN BOR (SERBIA)

Viša Tasić¹, Mira Cocić², Bojan Radović¹, Tatjana Apostolovski-Trujić¹

¹Mining and Metallurgy Institute Bor, Zeleni bulevar 35, 19210 Bor, Serbia

²Technical Faculty Bor, University of Belgrade, V.J. 12, 19210 Bor, Serbia

Abstract

This paper presents part of the research results of human's exposure to air pollution with suspended particles in selected educational and residential buildings in the town of Bor. In recent years, special attention has been paid to indoor air quality, because people spend a large part of their time during the day in closed micro-environments. Mass concentrations of 24 chemical elements were determined from PM₁₀ samples collected in the selected classroom at the Technical Faculty in Bor during March 2018. Major elements (Fe, Al, Na, Mg, Ca, K) and trace elements (As, Cd, Pb, Ni, Zn, Cu, Ti, Co, V, among others) were analyzed by Inductively Coupled Plasma Optical Emission Spectrometry (ICP OES) and Inductively Coupled Plasma Mass Spectrometry (ICP MS), respectively. The phase composition of the total suspended particulate matter (TSPM) samples was determined by X-ray powder diffraction (XRPD) analysis. XRPD analysis of the SPM samples identified: calcite (CaCO₃), quartz (SiO₂), gypsum (CaSO₄·2H₂O), dolomite (CaMg(CO₃)₂) and plagioclase (albite – NaAlSi₃O₈).

Keywords: indoor air pollution, particulate matter, copper smelter, arsenic.

1. INTRODUCTION

This work aims to present a part of the results of an ongoing study on human's exposure to suspended particulate matter in the indoor air in the town of Bor. The Bor town is situated in the eastern part of the Republic of Serbia. It has been a major center for mining and processing of copper and other precious metals for more than 100 years. So that, the town of Bor is assumed as a good representative of an urban-industrial environment in the Republic of Serbia, due to the sulfur oxides and particulate matter emissions from the copper smelter, situated next to the town. The amount of harmful substances contained in the copper smelter waste gases depends on many factors, such as: the choice of technological procedure for processing copper ore, the composition of the input raw material, temperature and duration of the process, type and amount of process gases and the like. Numerous exposure studies have associated the level of outdoor particulate matter with mortality and morbidity [1,2,3,4]. Thus the relationships between outdoor air pollution and health are beyond doubt. The influence of indoor air pollution on health is complex and still unexplored in detail so that more researchers explore this topic these years. In the indoor environment, in which people spend most of their time, both indoor and outdoor sources contribute to changes in PM levels. PM in indoor air originates from outdoor infiltration and additional indoor sources such as cooking and heating devices, tobacco smoking, etc. For health impact assessment studies, it is very important to determine PM mass concentration, PM particle size distribution, and chemical composition of PM in indoor microenvironments.

2. EXPERIMENTAL

The collecting of PM samples was carried out in the selected classroom at the Technical Faculty in Bor, from March 5th to March 19th in 2018 (as shown in Figure 1). There was a maximum of 20 people in the selected classroom during lectures and exercises (period from 8 am to 6 pm).

The window area in the classroom is 4 m² and the volume of the classroom is 50 m³. A sampling of the PM₁₀ and TSPM was performed with reference samplers Sven/Leckel LVS3 [5] simultaneously, indoors and in ambient air in the immediate vicinity of the classroom. Quartz fiber filters (Whatman QMA, 47 mm) were used throughout this study. Before and after sampling, the filter mass was measured in accordance with the procedure prescribed by the standard SRPS EN12341: 2015 [6]. Based on the difference between the masses of exposed and unexposed filters and the known airflow through the sampler, the mass concentrations of suspended particles of the PM₁₀ fraction were calculated.

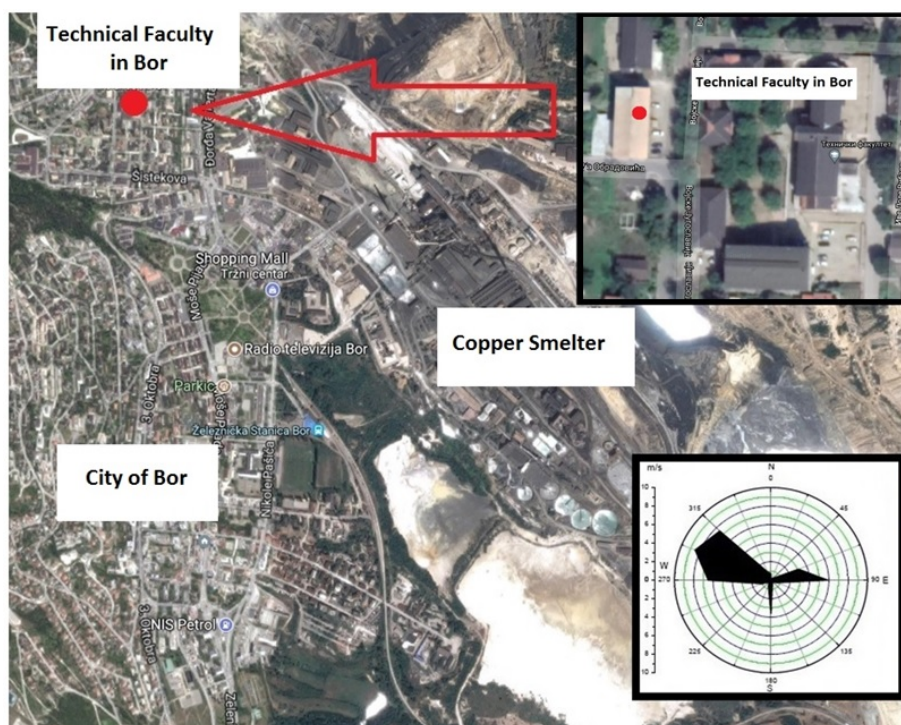


Figure 1 - Position of the Technical Faculty in Bor and the selected classroom in relation to the copper smelter

After measuring the mass of the exposed filters, they were further prepared for chemical analyzes in accordance with the procedure of SRPS EN14902: 2008 [7]. Major elements (Fe, Al, Na, Mg, Ca, K) and trace elements (As, Cd, Pb, Ni, Zn, Cu, Ti, Co, V, among others) were analyzed by Inductively Coupled Plasma Optical Emission Spectrometry (ICP OES) and Inductively Coupled Plasma Mass Spectrometry (ICP MS), respectively. The loaded filters, after gravimetric measurements, were prepared for chemical analyses following the procedure from CEN/TC 264 N779 (EU, 2008). Urban particulate matter Certified Reference Material 1648a [8] was analyzed for quality control and verification of the applied procedures for microwave digestion and trace element analysis. Recoveries were in the range from 80 to 120% for all measured elements. In this way, the mass concentrations of 24 chemical elements from the PM₁₀ samples were determined.

The phase composition of the composite TSPM sample was determined by x-ray powder diffraction analysis (XRPD). Diffractograms were obtained using the Siemens D500 diffractometer with CuK α radiation ($\lambda = 1.54184 \text{ \AA}$) and Ni-filters at a current of 20 mA and a voltage of 35 kV in the range of 5 - 85 2θ , with a step of 0.02 $^\circ$ and an exposure of 0.5 s per step. The relationship between phases is determined by the Powder Cell (PCW) software using structural models of: calcite [9], quartz [10], gypsum [11], dolomite [12] and plagioclase [13].

3. RESULTS AND DISCUSSION

The indoor average daily concentration of PM₁₀ in the classroom in the observed period was 28.2 µg/m³. Similarly, the outdoor average daily concentration of PM₁₀ was 46.1 µg/m³. The obtained results indicate that the average concentrations of PM₁₀ particles measured in the classroom were on average 1.6 times lower than those measured in the ambient air. According to national legislation [14], aiming to protect human health, annual limits for Pb, Cd, Ni, and As contents in PM₁₀ are 500, 5, 20, and 6 ng/m³, respectively. According to data shown in Table 1, average levels of As in PM₁₀ in the classroom, as well as in the ambient air, were above the prescribed annual limit in the studied period. Based on the results shown in Table 1, it can be noticed that there are no significant additional sources of suspended particles PM₁₀ in the classroom, so that mostly particles enter the classroom by infiltration from the external environment.

Table 1 - Summary of the chemical composition of PM₁₀ (ng/m³)

	TF Bor PM10-in	TF Bor PM10-out	MES Bor PM10-in [15]		TF Bor PM10-in	TF Bor PM10-out	MES Bor PM10-in [15]
As	17.0	49.9	1.9	Ca	455.3	896.7	541.4
Cd	1.4	2.1	0.3	Al	189.7	600.2	78.2
Mn	2.4	13.1	7.6	Mg	656	687.6	243.4
Pb	43.7	87.7	16.1	Na	55.1	77.2	303.3
Cu	179	574.5	39.1	K	1004	964.1	502.7
Zn	44.9	100.9	45.6	Co	1.1	0.9	0.2
Ni	0.1	1.9	4.3	Zr	0.9	0.8	2.4
Cr	0.2	1.2	21.6	V	1.8	1.6	0.8
Ti	10.0	21.9	23.4	Ce	0.5	2.2	
Sr	13.0	11.5	4.2	Se	5.8	6.1	1.5
S	905	1134.5	1691.7	Rb	1.2	1.5	0.6
Fe	803.9	915.2	414.2	Ag	1.1	3.1	1.9

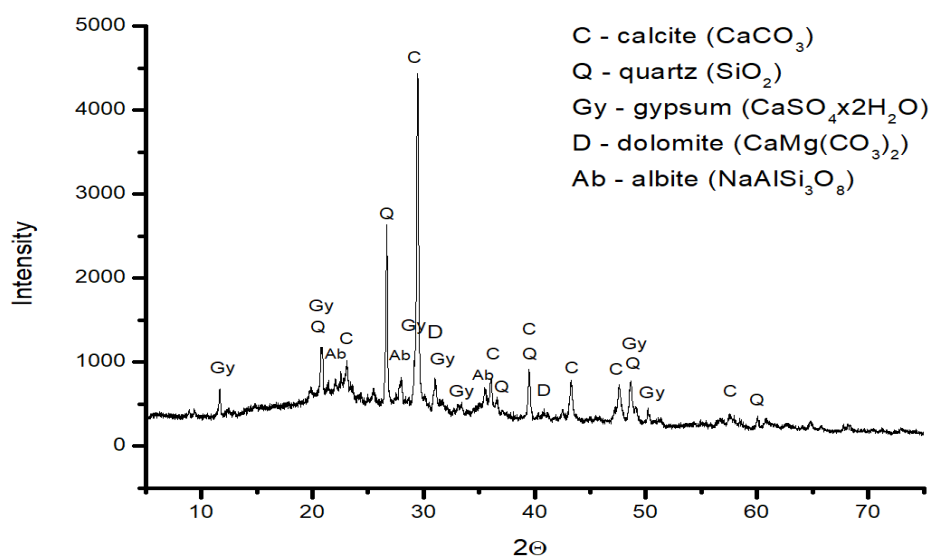


Figure 2 - X-ray powder diffraction diagram of TSPM samples collected in the classroom

The results from the reference [15], where the content of PM₁₀ in the high school classroom in Bor was presented for the winter period in 2019 (Table 1) shows that the contents of As, Cd, Pb,

and Cu in PM₁₀ were significantly lower in comparison with these obtained for the classroom at the Technical Faculty. This school is not located at the dominant wind direction in relation to the copper smelter, so the impact of pollutant emissions from the smelter is weaker.

Phase identification of TSPM samples was determined using XRPD analysis. The main peaks occur between 10 and 50° 2θ as shown in Figure 2. XRPD analysis of TSPM samples identified: silicate minerals (quartz and plagioclase (albite)), carbonate minerals (calcite and dolomite) and gypsum as a representative of hydrated sulfates. The most dominant minerals are calcite, followed by quartz, dolomite, gypsum and plagioclase (albite).

4. CONCLUSION

The results of the examination of the content of suspended particles of the PM₁₀ fraction in the classroom at the Technical Faculty in Bor show that a significant part of the air pollution from the external environment reaches the classroom. Of particular concern is the fact that the detected average arsenic content in PM₁₀ is almost three times higher than the annual limit value. The analyses of the PM₁₀ content show that there are no significant additional sources of suspended particles PM₁₀ in the classroom, so that mostly particles enter the classroom by infiltration from the external environment. This fact indicates the need to take additional measures to reduce the infiltration of particles from the external environment.

ACKNOWLEDGEMENTS

This work was financially supported by the Ministry of Education, Science and Technological Development of the Republic of Serbia, Grant No. 451-03-9/2021-14/ 200052 and 451-03-9/2021- 14/200131.

REFERENCES

- [1] Anderson H.R., Bremner S.A., Atkinson R.W., Harrison R.M., Walters S., Occup Environ Med, 58 (2001) 504–510.
- [2] Atkinson R.W., Fuller G.W., Anderson H.R., Harrison R.M., Armstrong B., Epidemiology 21 (2010) 501–511.
- [3] Pope III C.A., Dockery D.W., Journal of the Air and Waste Management Association, 56 (2006) 709-742.
- [4] Pope III CA, Burnett RT, Thun MJ, et al., J Am Med Assoc, 287 (2002) 1132–1141.
- [5] <https://www.et.co.uk/products/air-quality-monitoring/particulate-monitoring/kfg-lvs-3-single-filter-gravimetric-sampler> [accessed 12 September 2021]
- [6] SRPS EN 12341:2015, https://iss.rs/sr_Cyrl/project/show/iss:proj:49389
- [7] SRPS EN 14902:2008, https://iss.rs/sr_Cyrl/project/show/iss:proj:18667
- [8] <http://www.speciation.net/Database/Materials/National-Institute-of-Standards-and-Technology-NIST/SRM-1648a--Urban-Particulate-Matter-;i790> [accessed 12 June 2021]
- [9] Chessin H., Hamilton W.C., Acta Crystallographica, ACCRA 18 (1965) 689-693.
- [10] Zachariasen W. H., Plettinger H. A., Acta Cryst. 18, (1965) 710.
- [11] Cole W.F., Lancucki C.J., Acta Crystallographica B, ACBCA 30 (1974) 921-929.
- [12] Althoff P. L., American Mineralogist AMMIA 62 (1977) 772-783.
- [13] Horst W., Tagai T., Korekawa M., Jagodzinski H., Z. Kristallogr. 157 (1981) 233.
- [14] <https://www.paragraf.rs/propisi/uredba-uslovima-monitoring-zahtevima-kvaliteta-vazduha.html> [accessed 12 June 2021] (in Serbian)
- [15] <https://www.vin.bg.ac.rs/webiopat/#Publications>. [accessed 12 June 2021]

ISBN 978-86-6305-119-5